



Ayrshire
College 

Health and Social Care

Prospectus | Career Guide



**We're here to help you
get to where you want to be.
We'll inspire you, increase your
opportunities and raise
your ambitions so you're ready
to take the next step.
Start here, go anywhere**

together

we are Ayrshire College



Accessibility

Ayrshire College is fully committed to challenging discrimination, advancing equality of opportunity, promoting inclusion and celebrating the diversity of all of its students, staff, visitors and partners.

To request a copy of this information in another format please contact us:

Tel. 0300 303 0303

Email. marketing@ayrshire.ac.uk



www.ayrshire.ac.uk

Ayrshire College is a registered Scottish charity. Reg No SC021177

#weareAyrshireCollege



Why choose College?

Help with first steps towards your career

Change your career

Access further study at University

Start an apprenticeship

Help to start your own business

Study locally

Excellent facilities

#choosecollege

“ Sometimes the smallest step in the right direction ends up being the biggest step of your life. ”

Build your future at Ayrshire College.

Our campuses offer modern facilities with exciting learning spaces, to help you learn in a way that suits you. There are social spaces on each campus, including refectories and coffee shops, where you can relax and catch up with friends.



**Modern Learning
Resource Centres**



**Coffee Shops
and Refectories**



**Training
Restaurants**



**Training Hair and
Beauty Salons**



**Motor Vehicle
Garage**



**Gym and
Multi-Sport Pitches**



**Horticulture
Centre**



**Aeronautical and
Engineering Centre**



Science Labs



**Construction and
Trades Centre**



**Training Hospital
Ward**



Training Nursery



**Recording
Studio**



**Photography and
Broadcasting Studio**

An exciting career awaits you in Health and Social Care!

Health and Social Care is a growing sector with wide ranging opportunities for work.

We're looking for individuals who want to work with others, helping and supporting them through those difficult times when they're most vulnerable.

If you're someone who's caring and cares about others then a course in Health and Social care could be perfect for you.

Excited? Be a part of it. Start here.

#weareAyrshireCollege





Did you know?

We have state-of-the-art facilities that includes a modern Healthcare suite in each campus, used by students at all levels in practical sessions.

We have strong relationships with partners throughout Ayrshire and beyond including NHS, Local Authorities, wide variety of Third sector Providers and Universities.

“Gaining my HNC prepared me for University and a future career in Learning Disability Nursing. Without the support and encouragement from Ayrshire College lecturers and staff, this would not have been possible. So, thank you all.”

Kerry McKinnell

#choosecollege

Why choose Health and Social Care?

Make huge differences to people's lives.

You have the opportunity to work with and help lots of different people. This can make it a very rewarding role, and is often what people enjoy most about working in the sector.

Opportunities to develop and progress.

The sector is changing and growing all the time. You'll be presented with new information and challenges every day, keeping things fast-paced, exciting and interesting.

Flexible hours to fit in with your life.

Many jobs in the care sector offer shift patterns which are ideal for those who have family or other commitments.

“ Whether it be people with addiction, people with mental or physical health problems, or children in care. If they can't see anything other than the life they have, or the beliefs that they have about themselves, they can't be anything other than that. That's where our care professionals come into play. They are visible, they take the lead and they give people hope.”

Fiona McQueen,
Former Chief Nursing Officer



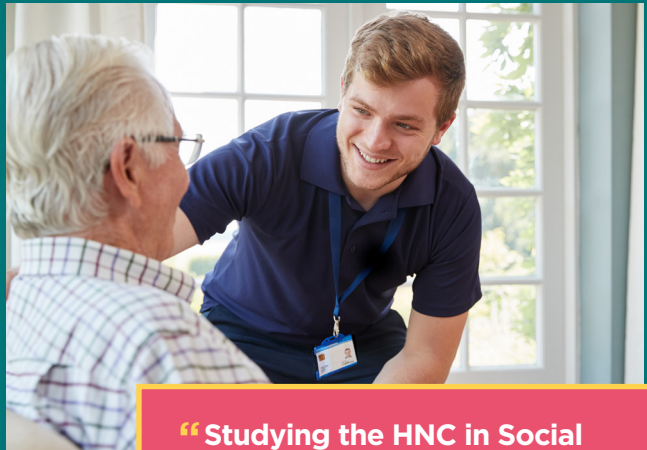
Careers

- Adult, Mental Health, Child and Learning Disability Nursing
- Health Care Support Worker
- Occupational Therapy
- Medical Administration
- Counselling
- Social Worker
- Social Care Support Worker
- Personal Support Worker
- Family Support Worker
- Care Assistant
- Classroom Assistant for Children with Additional Support Needs
- Youth Worker
- Community Support Worker
- Community Learning and Development Worker
- Activities Co-ordinator
- Care Home Manager



#weare AyrshireCollege

Those with care qualifications are in high demand. The sector needs staff now more than ever, so there are plenty of opportunities out there.



“ Studying the HNC in Social Services helped bridge a gap between my current career and my social work training. I am now at Glasgow Caledonian University doing a Masters in Social Work and am a registered Trainee Social Worker. ”

Karrie MacDonald

#choosecollege

What are employers looking for?

It takes a certain type of person to work in care. If you are empathetic, compassionate, respectful, approachable, polite, kind and hardworking then you have all the right personality traits. Here's what employers tend to look for...

Alert

Often in the Care sector you need to be quick to respond. You need to be able to think on your feet and react to the changing needs of the individuals you are working with.

Ability to stay calm

Care can involve managing some high-pressure situations, working under stress and dealing with new challenges on a daily basis.

Adaptable/Flexible

Once you start your career in care it can lead you to a wide variety of employment opportunities and further study.

Communication

Good communication skills are essential. You'll have to be able to communicate those you are caring for, their families, your co-workers and other departments or agencies when discussing patient care.

Attention to detail

When working with most vulnerable in society attention to detail improves the lives of individuals you are looking after.

Team worker

Working with others is vital as Care involves being part of a huge team.

Start here...

To pursue a career in care you need a real interest in working with people and a satisfactory reference. An interview with a member of our team will ensure we get you on the programme that's right for you.

Our programmes range from SCQF Level 4-7. If you don't have formal qualifications, but have life/work experience, we may consider you for a place.

Some of our courses which have work based experience require you to become a member of the PVG scheme.



Courses available in:

- Health Care
- Oral Health Care
- Nursing
- Counselling
- Youth Work
- Working with Communities
- Social Care
- Social Services
- Social Work

Click here
to see all
courses



#choosecollege

Go anywhere...

Many people use our non-advanced courses to prepare them for further study.

Our SWAP courses for nursing and social work are specifically designed to prepare adults who are returning to education for advanced level study at college or university.

Many students use HNC programmes as a platform to degree level study. Partnership links with universities make it easy for our students to progress to a wide variety of courses. Articulation links allow direct second year entry for certain programmes.

There are opportunities to move straight into employment. Some students go directly into jobs in oral health care, youth work and community based settings.

Our SVQ Social Services and Health Care has a very high success rate for employment with students moving into roles such as Support Workers, Home Care Workers or Care Assistants.



HNC courses allow progression into a wide range of roles depending on the area of study. There are opportunities in nursing, health care, counselling, youth work, community development, adult education, adult care, residential child care or work with people with learning difficulties or addiction.

Careers in health care are more likely to require a combination of further study and on-the-job medical training.

Careers in social care are more likely to start with on-the-job training and allow people to work towards professional qualifications later on in their career.

Please check with each university for their articulation requirements prior to your UCAS application. Entry is subject to availability of places and meeting entry requirements, other options may also be available.

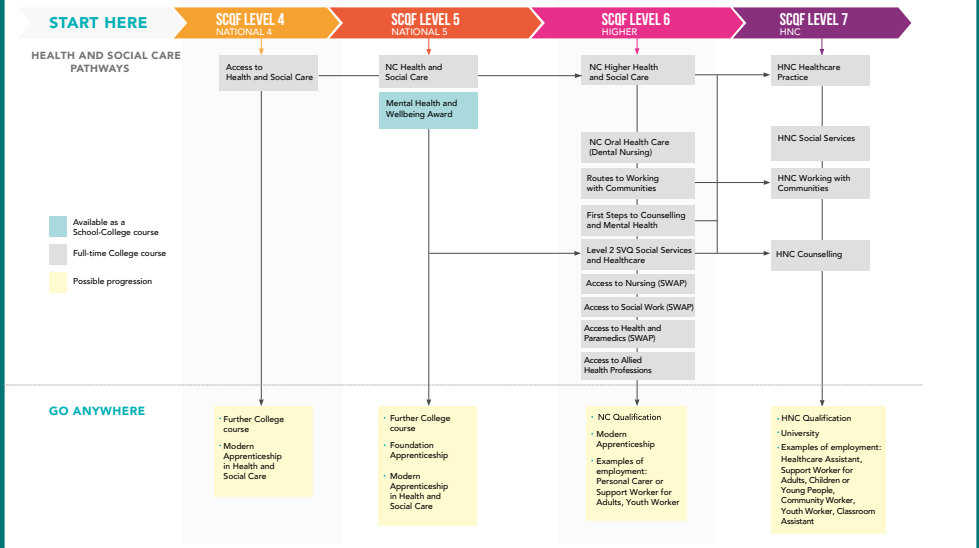
[#choosecollege](#)

What path will you take?

Our course pathway maps will help you understand the various routes you can take to help you achieve the qualifications you need.



Course pathway map for Health and Social Care



Still unsure?

Contact our Student Services team and speak to one of our advisors who will be happy to help you.

You can book an appointment to see the Advisor for your curriculum area either in person, over the phone or by email:

studentservices@ayrshire.ac.uk

Tel no. 01294 555 333



Go for it!

You're just two steps away from starting your career in Health and Social Care...

Step 1...

Click here to see our full list of courses at www.ayrshire.ac.uk

Step 2...

Apply online now or download our Application Guide **here**

Full-time courses start in January and August. Apply as soon as you can because our courses fill up quickly!



#choosecollege

