

School-College Courses

2024 - 2025 | Course Directory

Of Course You Can



Accessibility

Ayrshire College is fully committed to challenging discrimination, advancing equality of opportunity, promoting inclusion and celebrating the diversity of all of its students, staff, visitors and partners.

To request a copy of this information in another format please contact us:

Tel. 0300 303 0303

Email. marketing@ayrshire.ac.uk

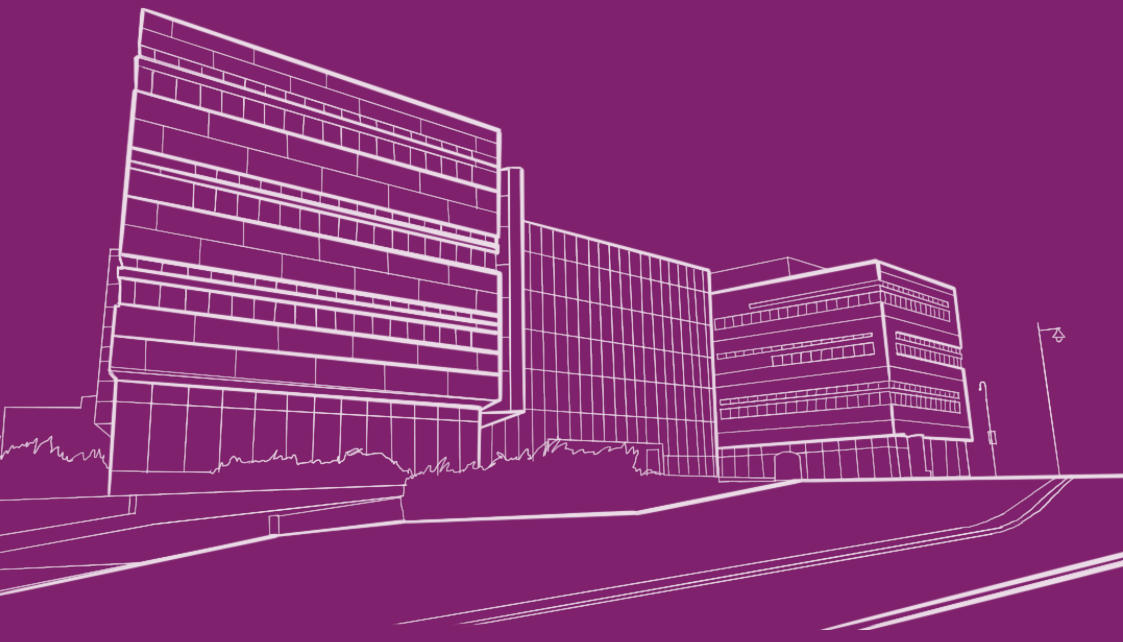
www.ayrshire.ac.uk

Ayrshire College is a registered Scottish charity. Reg No SC021177



**We're here to help you
get to where you want to be.
We'll inspire you, increase your
opportunities and raise
your ambitions so you're ready
to take the next step.
Of course you can.**

we are Ayrshire College



Build your future at Ayrshire College

Our campuses offer modern facilities with exciting learning spaces, to help you learn in a way that suits you. There are social spaces on each campus, including refectories and coffee shops, where you can relax and catch up with friends.



**Modern Learning
Resource Centres**



**Coffee Shops
and Refectories**



**Training
Restaurants**



**Training Hair and
Beauty Salons**



**Motor Vehicle
Garage**



**Gym and
Multi-Sport Pitches**



**Horticulture
Centre**



**Aeronautical and
Engineering Centre**



Science Labs



**Construction and
Trades Centre**



**Training Hospital
Ward**



Training Nursery



**Recording
Studio**



**Photography and
Broadcasting Studio**

#choosecollege

School-College classes are a valuable part of the curriculum.

We provide high-quality senior phase vocational courses from Level 4 and above. They are intended to support young people like you get ready for employment and plan progression pathways onto full-time courses and university. They also build a network of support as you move between school and college and, potentially university.



Why choose a School-College course?

Wider choice of vocational courses

Use of industry standard technology/equipment

Raise awareness of progression opportunities

Access a range of discounts with a student card

Access to Learning Resource Centres and printing

Use of restaurants and salons

Help with full-time college applications

More independent learning

Meet students from other schools with the same interests

Expand social life

Learn in an adult environment

#choosecollege



Did you know?

Partnership working with our schools is very important and can only be achieved through the high-quality learning and teaching which the college delivers.

Our School-College Partnership team meet regularly with our school partners to discuss the attendance and progress of each pupil to help support young people towards being successful on their college course.

All the partnership work which happens between the schools and the college is a contribution to the Developing the Young Workforce commitments. The ultimate aim is to close the attainment gap and reduce youth unemployment.

[#choosecollege](#)

Types of courses

Skills for Work (SfW)

Skills for Work courses focus on generic employability skills needed for success in the workplace. The courses offer learners opportunities to learn these skills through a variety of practical experiences that are linked to vocational areas.

National Progression Award (NPA)

NPAs are aimed at developing learners' knowledge and understanding and, where appropriate, practical experience of a given area of vocational education.

Scottish Vocational Qualification (SVQ)

Scottish Vocational Qualifications (SVQs) are based upon national standards and provide evidence that learners can do their jobs well. Studied in the workplace, in college or with training providers.

National Certificate (NC)

A National Certificate (NC) is sometimes suitable for students with no formal qualifications. They offer practical help in developing skills for work and can, in some instances, provide access to higher level programmes such as a Higher National Certificate (HNC) or Higher National Diploma (HND).

Foundation Apprenticeship (FA)

Foundation Apprenticeships are a work-based learning opportunity for senior-phase secondary school pupils. Lasting two years, pupils typically begin their Foundation Apprenticeship in S5. Young people spend time out of school at college or with a local employer, and complete the Foundation Apprenticeship alongside their other subjects like National 5s and Highers. If you are in S6 there are also one-year Foundation Apprenticeships available which are delivered over 2 full days including both college and employer placement.

HNC (Higher National Certificate)

HNC courses provide the practical skills you need to do a job and the theoretical knowledge your employer will expect you to have. All the courses are made up of Higher National Units and usually take one year to complete.

Scottish Qualifications Authority Units

Units which are taken from SQA but are not attached to a group award.

Course levels explained

Level 4

SCQF Level 4 (Access) qualifications are the equivalent to National 4 level within a school. Progression after completing a Level 4 course would be entry into a Level 5 course.

Level 5

SCQF Level 5 qualifications are the equivalent to National 5 level within a school. Progression after completing a Level 5 course would be entry into a Level 6 course.

Level 6

SCQF Level 6 qualifications are the equivalent to Higher level within a school. Progression after completing a Level 6 course would be entry into a Level 7 course.

Level 7

SCQF Level 7 (HNC) qualifications are the equivalent to Advanced Higher level within a school and also first year of university. Progression after completing a Level 7 course would be entry into a Level 8 (HND) course or direct entry into year 2 at university (depending on course).

HNC infill

These programmes are an opportunity for schools pupils to infill in to a full-time HNC course as part of their school timetable. Attendance will be required over two full days a week.

Our Courses

Aeronautical

SVQ Performing Engineering Operations (infill) (Level 5) Ayr Campus

SVQ Performing Engineering Operations - Prestwick Academy (Level 5) Ayr Campus

SVQ Performing Engineering Operations - South Ayrshire (Level 5) Ayr Campus

Foundation Apprenticeship Engineering - Year 1 (Level 6) Ayr Campus

Art, Design and Media

Film Making including NPA Digital Media (Level 5) Ayr Campus

Portfolio - Life Drawing and Printmaking (Level 6) Ayr Campus

Business

HNC Accounting (Level 7) Ayr, Kilmarnock and Kilwinning Campus

Computing

NPA Software Development (Level 4) Kilmarnock Campus

NPA Software Development (Level 6) Kilmarnock Campus

HNC Cyber Security (infill) (Level 7) Kilwinning Campus

Visit www1.ayrshire.ac.uk/schools to learn more

Construction

Steps to Work: Introduction to the Construction Industry (Level 4) Ayr, Kilmarnock and Kilwinning Campus

Construction Crafts (Level 5) Ayr Campus

Skills for Work: Introduction to Renewable Energy (Level 5) Ayr and Kilwinning Campus

Foundation Apprenticeship Civil Engineering - 2 years (Level 6) Ayr Campus

HNC Architectural Technology and Sustainability (infill) (Level 7) Ayr Campus

HNC Construction Management and Sustainability (Infill) (Level 7) Ayr Campus

Early Education

Skills for Work: Early Education and Childcare (Level 4) Kilmarnock Campus

Skills for Work: Early Education and Childcare (Level 5) Ayr, Kilmarnock and Kilwinning Campus

Skills for Work: Early Education and Childcare (Greenwood Academy) (Level 5) Kilwinning Campus

Skills for Work: Early Years (Kyle Academy) (Level 5) Kyle Academy

Foundation Apprenticeship Social Services, Children and Young people - 2 years (Level 6) Ayr and Kilwinning Campus

NPA Children and Young People (Level 6) Ayr and Kilwinning Campus

NPA Social Services, Children and Young People (Prestwick Academy) (Level 6) Prestwick Academy

Visit www1.ayrshire.ac.uk/schools to learn more

Engineering

SVQ Performing Engineering Operations
(Level 4) Kilmarnock Campus

SVQ Performing Engineering Operations (infill)
(Level 5) Kilwinning Campus

SVQ Performing Engineering Operations
(Kilmarnock Academy and Grange Academy)
(Level 5) Kilmarnock Campus

SVQ Performing Engineering Operations - Robert Burns Academy
(Level 5) Kilmarnock Campus

SVQ Performing Engineering Operations
(Level 5) Kilwinning Campus

Foundation Apprenticeship Engineering - 2 years
(Level 6) Kilwinning Campus

HNC Electrical (infill) (Level 7) Kilwinning Campus

HNC Mechatronics (infill) (Level 7) Kilwinning Campus

Hair, Beauty, Complementary Therapies and Make-Up Artistry

Steps to Work: Hair and Beauty (Level 4)
Ayr, Kilmarnock and Kilwinning Campus

Health and Social Care

Mental Health and Well Being Award
(Level 5) Ayr, Kilmarnock and Kilwinning Campus

NC Oral Healthcare (Level 6) Kilwinning Campus

Skills for Work: Health and Social Care (Level 6) Ayr Campus

Visit www1.ayrshire.ac.uk/schools to learn more

Hospitality

NPA Professional Cookery (Level 4) Ayr and Kilmarnock Campus

Professional Cookery (Level 4)
Garnock Academy, Ayr and Kilmarnock Campus

Foundation Apprenticeship - Hospitality
(Level 5) Loudoun Academy

NPA Hospitality (Level 5) Ayr and Kilmarnock Campus

Motor Vehicle

Skills for Work: Automotive Skills (Level 4) Kilmarnock Campus

Skills for Work: Automotive (Level 4) Queen Margaret Academy

Music and Sound

NPA Sound Production (Level 6) Ayr Campus

Performing Arts

NPA Acting and Performance (Level 6) Ayr Campus

Production Arts (Including Technical Theatre)
(Level 6) Ayr Campus

Science

Foundation Apprenticeship Food and Drink Technologies -
Loudoun Academy (Level 6) Kilmarnock Campus

Foundation Apprenticeship Scientific Technology (Laboratory Skills)
(Level 6) Kilwinning Campus

HNC Applied Sciences (infill)
(Level 7) Kilmarnock and Kilwinning Campus

Visit www1.ayrshire.ac.uk/schools to learn more

Social Science

NPA Criminology (Level 6)

Ayr, Kilmarnock and Kilwinning Campus

NPA Psychology (Level 6) Ayr and Kilwinning Campus

HNC Social Sciences (Level 7) Kilmarnock Campus

PDA Psychology (Level 7) Kilmarnock and Kilwinning Campus

Sport and Fitness

Skills for Work: Uniformed Services (Level 4)

Kilmarnock and Kilwinning Campus

HNC Physical Activity and Health (Level 7)

Kilmarnock and Kilwinning Campus

HNC Sports Coaching and Development (infill) (Level 7)

Ayr, Kilmarnock and Kilwinning Campus



Visit www1.ayrshire.ac.uk/schools to learn more

Applications

We have developed the application process every year and endeavour to align the process as much with that of full-time courses where possible. All applications submitted require approval from the respective school before these can be processed. Once they are approved they will be processed in the same way as full-time applications, with emails being issued to students to advise of the outcome of application.

Failure to submit an application before the deadline could result in you losing out on a place on the course due to the course being full.

When do applications open?

Applications for all School-College programmes open in the middle of January, allowing for the option process to take place within schools. Applications will close towards the end of March and the selection process takes place in April. We aim to have all applications in and offers processed by the end of May. Any applications received after the closing date in March will only be considered if courses still have spaces after the selection process takes place.

“ These placements provide the opportunity for young people to develop practical skills and knowledge within the workplace, ready to take the next step into their chosen career. ”

Katrina McEwan,
Human Resources
Advisor at EGGER

#choosecollege

FAQs

What do we do when an application is submitted?

When an application is submitted we will contact the relevant school for approval. The applicants who have been approved by the school will be moved onto the next stage.

How long is the wait between application and selection?

Applications can be submitted from January to the end of March. The process for selection will be communicated to your school.

If you have any questions regarding your application status you should approach your guidance teacher who will contact the college.

How to apply

A full list of courses can be found at:
www1.ayrshire.ac.uk/schools



Watch our short video on how to apply here ▶



Or download our step by step guide here ▶



#choosecollege

Interviews

Some courses may require you to attend an interview as part of the selection process. Interviews for school college programmes will take place in April. Successful candidates will be selected from the interviews to ensure a fair process.

When do interviews take place?

Interviews for school college programmes will take place in April, usually after the Easter break. This allows you to receive your offer before you go on exam leave. There will be another interview week in June which will be used to interview any late applicants for courses that still have spaces.

What happens on the day of interview?

Please visit www1.ayrshire.ac.uk/schools to view our interview handbook for more information about what will happen on the day.

What happens after the interview?

The offers will be communicated to you by email/text.

What happens if you fail to attend your interview?

If you fail to attend your interview you will be rescheduled for an interview the first week in June providing places remain on the course. Failure to attend the 1st interview could result in potentially losing the opportunity of a place on the course as the course may be full. Please let us know as soon as possible if you cannot attend and we will try our best to accommodate this (please note, this is not always possible).



Student experience

Here to support you...

The Student Experience Team at Ayrshire College is here to support you throughout your learning journey. We provide you with the right support at the right time.



Learning Resource Centre (LRC) is here to assist your studies at college. We do this by providing access to technology, resources and support.

email: lrc-ayr@ayrshire.ac.uk, lrc-kilmarnock@ayrshire.ac.uk,
lrc-kilwinning@ayrshire.ac.uk



Inclusive Learning is open to every student who may benefit from extra help or support during their studies either on an ongoing basis or at specific times.

Email: inclusivelearning@ayrshire.ac.uk



Student Services provide information, support, advice and guidance to all students. During your time at college, we can signpost you to college services such as: Funding, Inclusive Learning, College Liaison Officers, Counselling and more, in addition to external support agencies.

Email: se@ayrshire.ac.uk

School-College Partnership Officers

On the first day you attend college a School-College Partnership Officer based at your college campus will make themselves known to you, they will support you and liaise on your behalf between the College and your school.

They will regularly visit your school, providing attendance and progress reports, communicating any discipline issues and providing support if you choose to move onto further or higher education at Ayrshire College as a full-time student.

Contact us:

Kirsty Taylor

School-College Partnership Team Leader

kirsty.taylor@ayrshire.ac.uk | Mobile: 07923 162 450

Yvonne Adamson

North Ayrshire School-College Partnership Officer

yvonne.adamson@ayrshire.ac.uk | Mobile: 07708 870 674

Caroline Allison

South Ayrshire School-College Partnership Officer

caroline.allison@ayrshire.ac.uk | Mobile: 07708 870 825

Ashleigh Brown

East Ayrshire School-College Partnership Officer

ashleigh.brown@ayrshire.ac.uk | Mobile: 07708 870 527

Message to parents

The College's School-College Partnership Team is dedicated to ensuring that school pupils develop the relevant skills they need for the world of work. We aim to inform them as early as possible about the choices available to them to prepare themselves for the next stage of their life.

Although pupils study a specific qualification, they will also be developing essential skills such as confidence, communication, teamwork, and problem solving. These skills are essential to the jobs they are interested in and the wider world of work.

Lecturers will follow a planned teaching schedule, which you will be kept informed of through regular communication between the lecturer, School-College Partnership Team and the young person's school. You will also receive regular progress reports throughout the year.

Attendance at College is vital to ensure the pupil can successfully complete the course and is taken during every College class. Weekly attendance reports are sent to schools, and monthly attendance meetings take place between the College and each school.

#choosecollege

Frequently Asked Questions

Who can apply for these courses?

The School-College courses are open to S4 to S6 pupils. Places are limited and there is a selection process that includes an application and interview (some courses require an aptitude test). Your guidance teacher will be able to assist you with this process.

You should:

- Be prepared to participate fully in the course.
- Be prepared to abide by Ayrshire College policies and code of conduct.
- Be interested in the course and have the entry requirements stated

When will I attend college?

You will attend College alongside, and as an equally important part of, your school studies. All dates, start and finish times are listed on the College website.

Attendance at College is vital to ensure you can successfully complete the course.

What kind of support will I get while at school and college?

At College, there will be support from your lecturer. A feedback and review process to keep you on track will be supported by the School-College Partnership team. At school, you will get support from your guidance teacher and Skills Development Scotland advisor.



How do I travel to college?

You will agree travel arrangements with your school, ensuring that you arrive on time for your College class. You will not have to pay for your transport between school and the College campus.

How will I be assessed at college?

In vocational training programmes, students are assessed on their skills and knowledge of the areas covered in the course. There will be known points throughout the year that you will be assessed. Assessments vary depending on the course you have chosen.

How will I know how I am doing on the course?

Your lecturer will provide the School-College Partnership team and your school with regular formal tracking throughout the year. You will also be able to track and question your progress by speaking to your lecturer.

How will the course be certificated?

If the units within the course are Scottish Qualifications Authority units then these will appear on your SQA certificate along with your other subjects in school. If the units are from another awarding body, these will be sent out separately to your home address.

Where can I find out more information?

For further information speak to your guidance teacher, a Skills Development Scotland Careers Advisor or the School-College Partnership team within Ayrshire College.



Of Course You Can

AYR CAMPUS

DAM PARK
AYR
KA8 0EU

TEL: 0300 303 0303

KILMARNOCK CAMPUS

HILL STREET
KILMARNOCK
KA1 3HY

TEL: 0300 303 0303

KILWINNING CAMPUS

LAUCLAN WAY
KILWINNING
KA13 6DE

TEL: 0300 303 0303



www.ayrshire.ac.uk